

---

# Avidyne

## CMax™ Data Update Guide





## Document Revision History

Date	Revision	Description
28 Sep 2004	00	Initial Release per ECO 04-201
25 Jan 2005	01	Updated Release per ECO 05-005

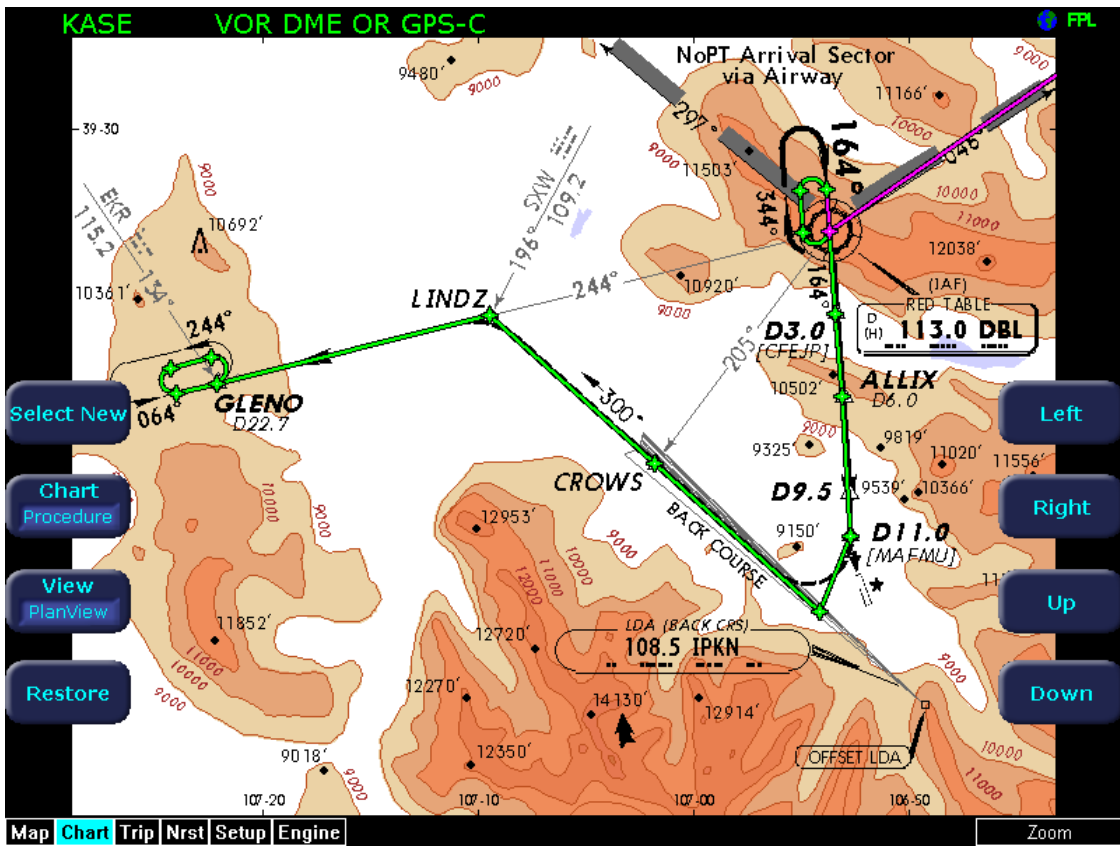
## System Configuration

Minimum System Requirements to install and run the CMax Data Extractor with the Jeppesen JeppView package:

PC with Pentium II or higher processor; MS Windows operating system (Windows 2000, XP, or XP Tablet); 64MB RAM, 8X CD ROM, 300MB free hard drive space.

Portable USB-compatible Zip® Drive required for all MFD data updates. Use Avidyne part number 200-00048-000 or another USB Zip® device.

NOTE: Avidyne recommends the use of a 250MB Zip® drive and disk. The 250MB disk and drive will allow the loading of Jeppesen chart subscriptions up to and including coverage of the entire United States and Canada. Users subscribing to a region smaller than the entire United States may be able to use a 100MB disk and drive. A 250MB drive can use 100MB disks for smaller coverage areas, but a 100MB drive will not function with 250MB disks. A 750MB drive may also be used with 250MB or 750MB disks, but requires external power.



# Introduction

This guide outlines the process for updating the Avidyne CMax terminal procedure chart data on your Avidyne FlightMax EX5000 or EX500 MFD. (Hardware part numbers 700-00004-() and 700-00007-(), respectively.) The chart data is provided through a subscription service with Jeppesen Sanderson, Inc. Note that this subscription is distinct from a normal NavData subscription, and must be specifically purchased. CMax coverage does not have to correspond with a NavData coverage area. All CMax chart data is copyright Jeppesen Sanderson.

## ***Initial Setup***

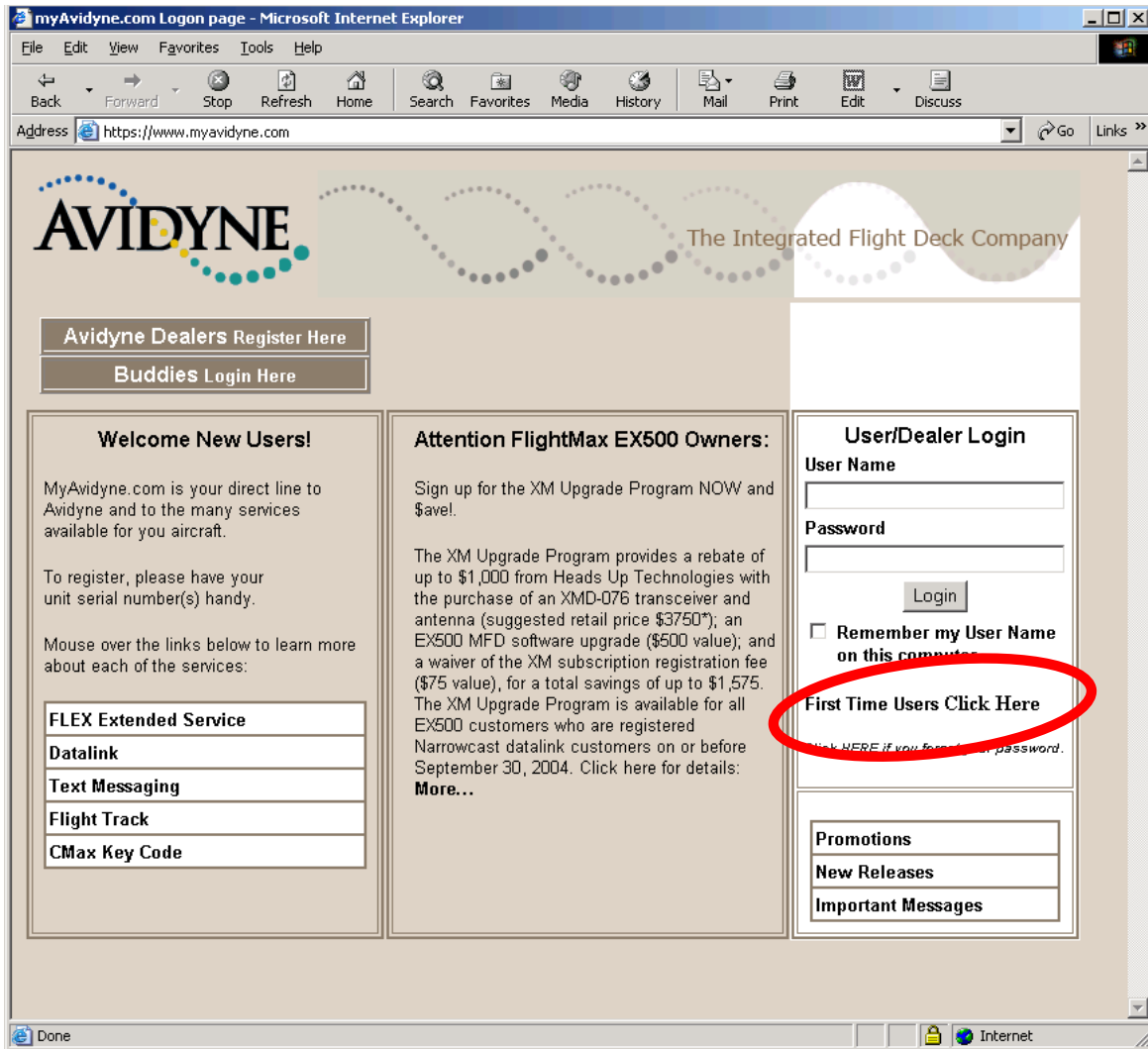
There are three preparatory steps to complete before you are ready to begin a chart data load operation. These steps only need to be completed once, when your subscription is first issued.

### **1. Obtain a subscription from Jeppesen**

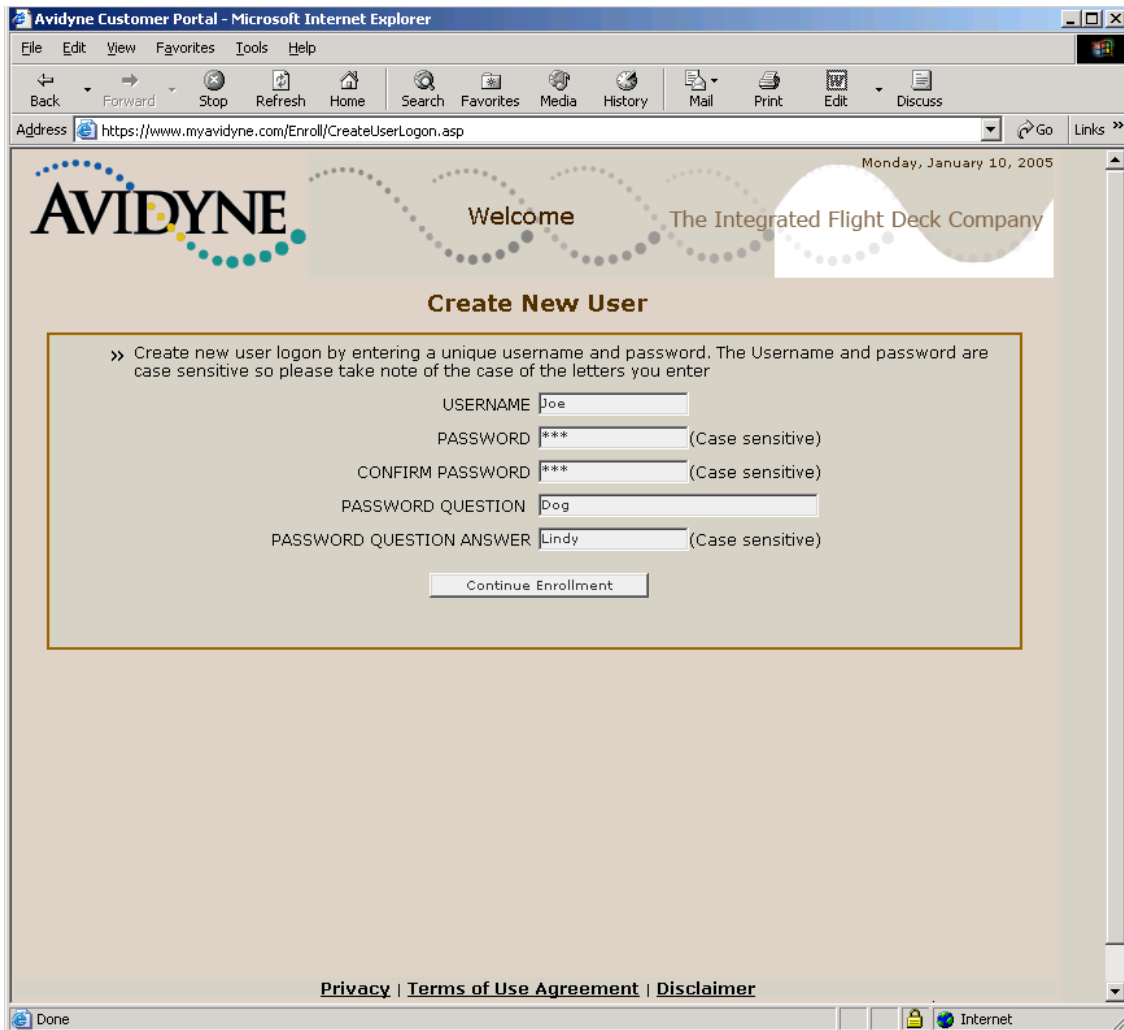
The first step in obtaining CMax chart data for your MFD is to set up a data subscription with Jeppesen Sanderson, Inc. This can be accomplished by calling 303-328-4274 or 800-621-JEPP (5377), or through their web site at [www.jeppesen.com](http://www.jeppesen.com) (when available). Once a subscription has been ordered, a CD-ROM of chart data will be mailed to you along with your **Jeppesen Software Serial Number** (subscriber number), a number unique to your subscription and the key to unlocking the chart data for the coverage area you have purchased. For your initial month of subscription, and at future dates when you may add or alter your chart coverage area, Jeppesen may also provide you with certain coverage codes. These allow you to access new coverage areas before your subscription number becomes active for those areas, which may take one data cycle. Along with your data CD, you will also receive a program CD which installs the JeppView PC program on your computer for pre-flight review of charts.

### **2. Register your MFD at [www.myAvidyne.com](http://www.myAvidyne.com)**

If you have not done so already, register your MFD at [www.myAvidyne.com](http://www.myAvidyne.com). To do this, you will need to have your MFD serial number on hand. To find your MFD serial number, power up the MFD and go to the Setup or Aux page. The serial number will be displayed near the top of the screen, and will be in the format 00001850 or 20498214. If you have a PFD installed in your aircraft, make note of the PFD serial number, as well. This is typically found in the aircraft maintenance records. Go to [www.myAvidyne.com](http://www.myAvidyne.com) and you will find yourself on the following screen:



- 3. Click on the link for First Time Users (shown above).**  
This will start the process to register your account on myAvidyne.com. Next you will see the screen for entering your personal information:



**4. Enter your desired username and password.**

Note that usernames must be at least 4 characters long and passwords at least 6 characters long. The password is case sensitive. You may also select a password question that will help in the case that you forget your password. Press “Continue Enrollment” to go to the next screen:

Monday, January 10, 2005

**AVIDYNE** Welcome The Integrated Flight Deck Company

**Enter Contact Information**

>> Enter Your Contact Information. \* marks required fields

FIRST NAME  \*

LAST NAME  \*

COMPANY NAME

ADDRESS LINE 1  \*

ADDRESS LINE 2

CITY  \*

STATE  \*

ZIP CODE  \*

COUNTRY  \*

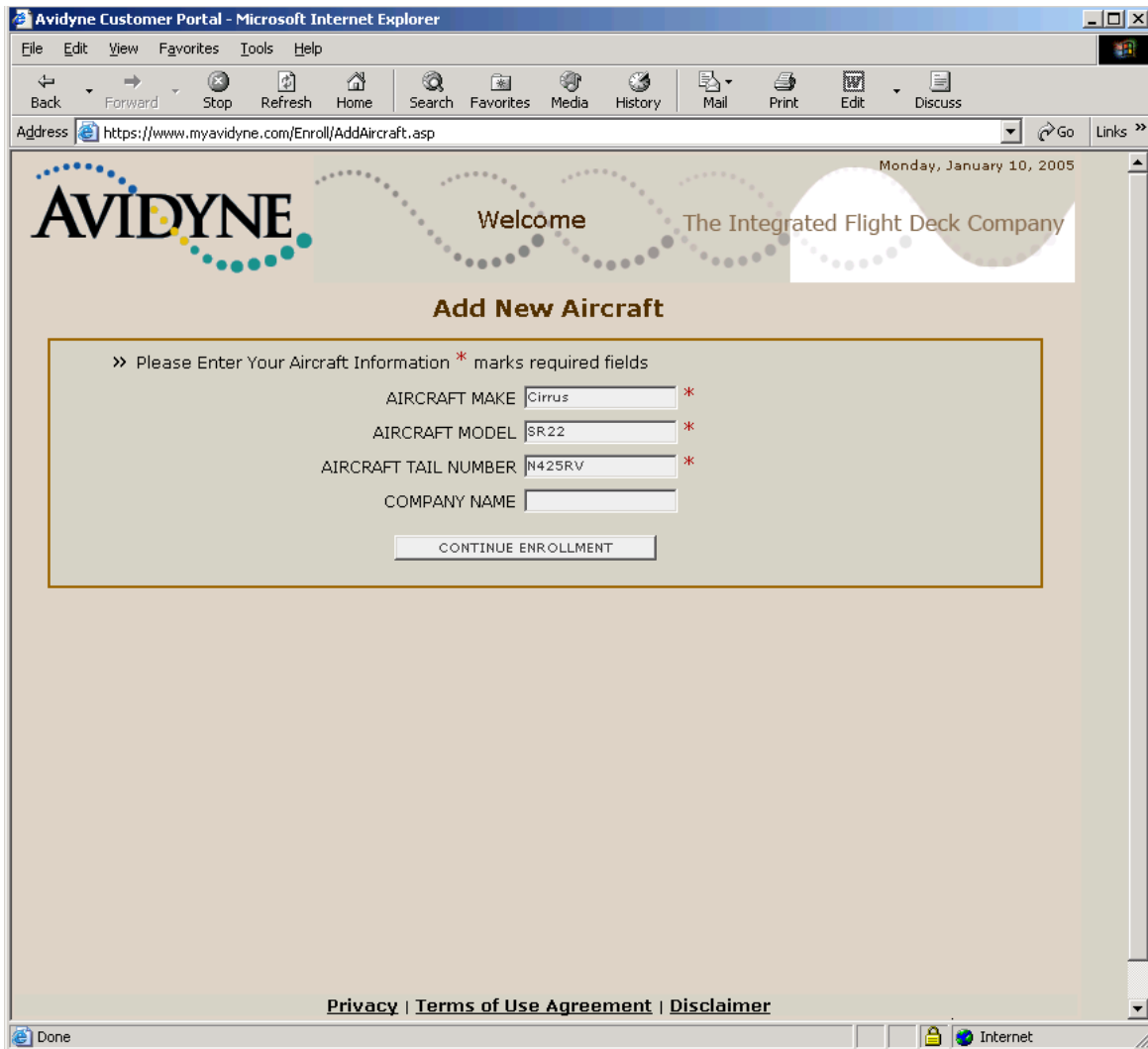
PHONE NUMBER  \*

EMAIL ADDRESS  \*

[Privacy](#) | [Terms of Use Agreement](#) | [Disclaimer](#)

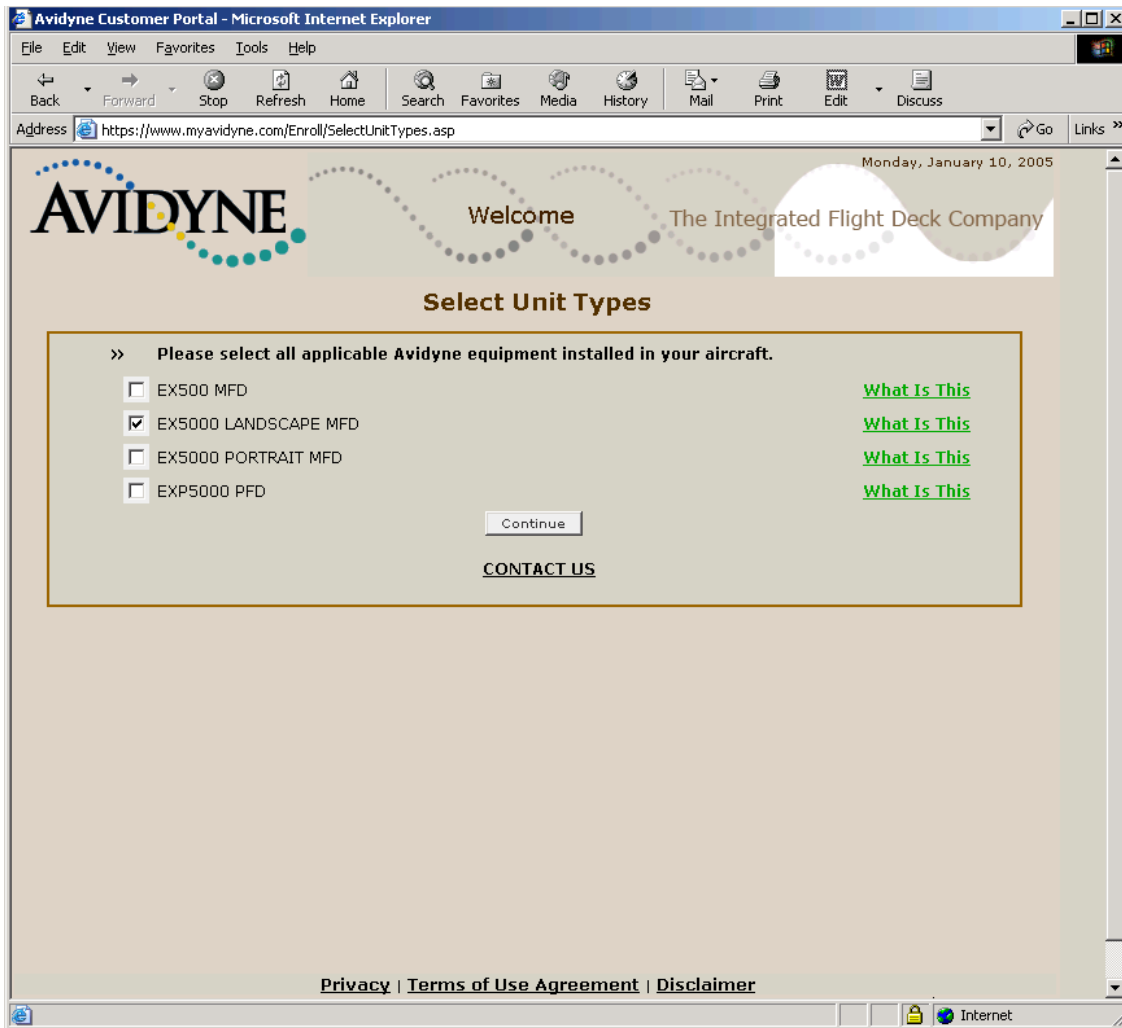
- 5. Enter your name, address, telephone, and email address.**  
This information will be kept private and only for Avidyne use to contact you, if necessary. Press “Continue Enrollment” on this screen to move to the next:



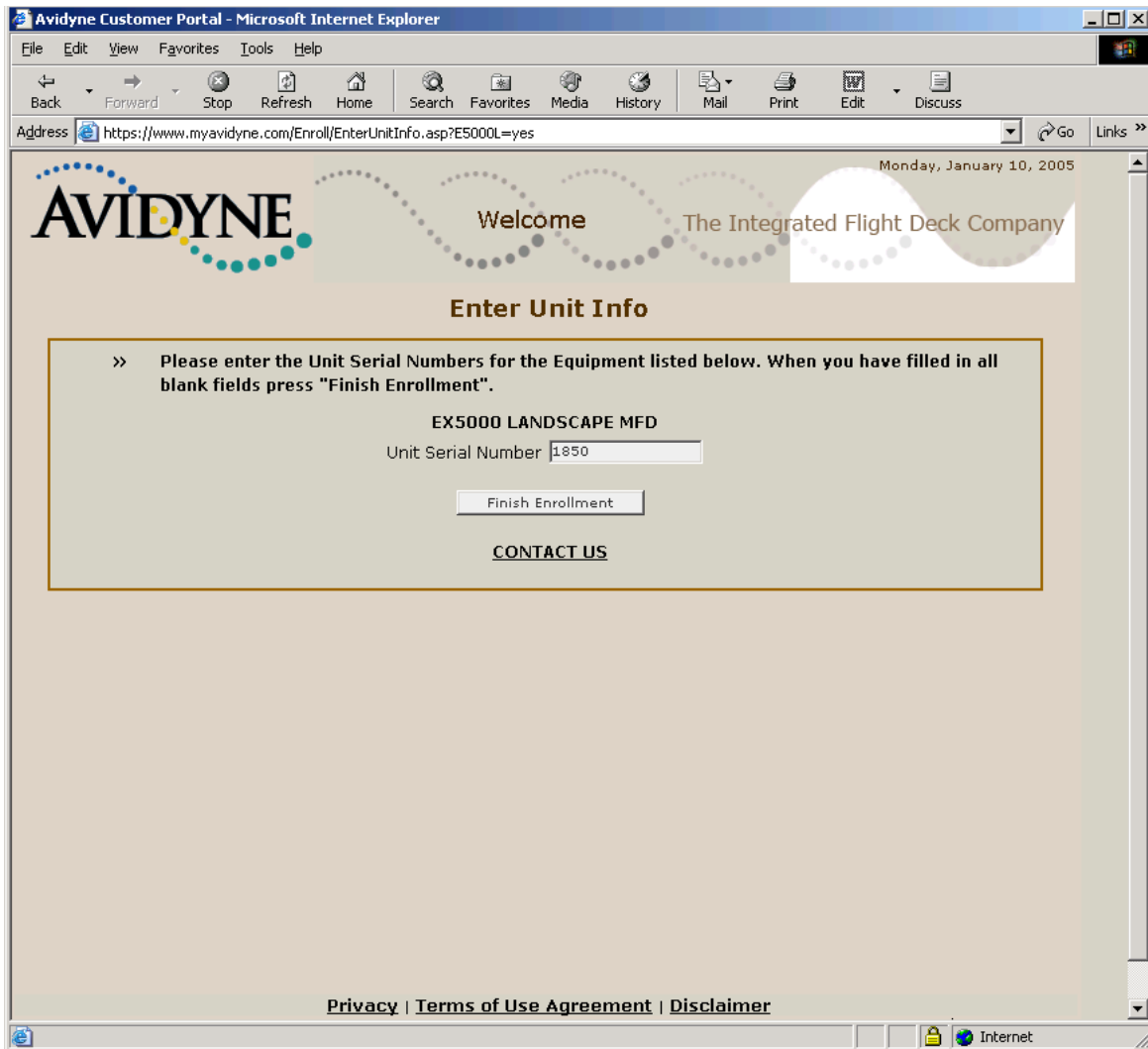


**6. Enter the information describing your aircraft.**

If you have multiple aircraft, enter one now. You will have a chance to enter the others after your account is initially established. Press “Continue Enrollment” to move to the next screen:

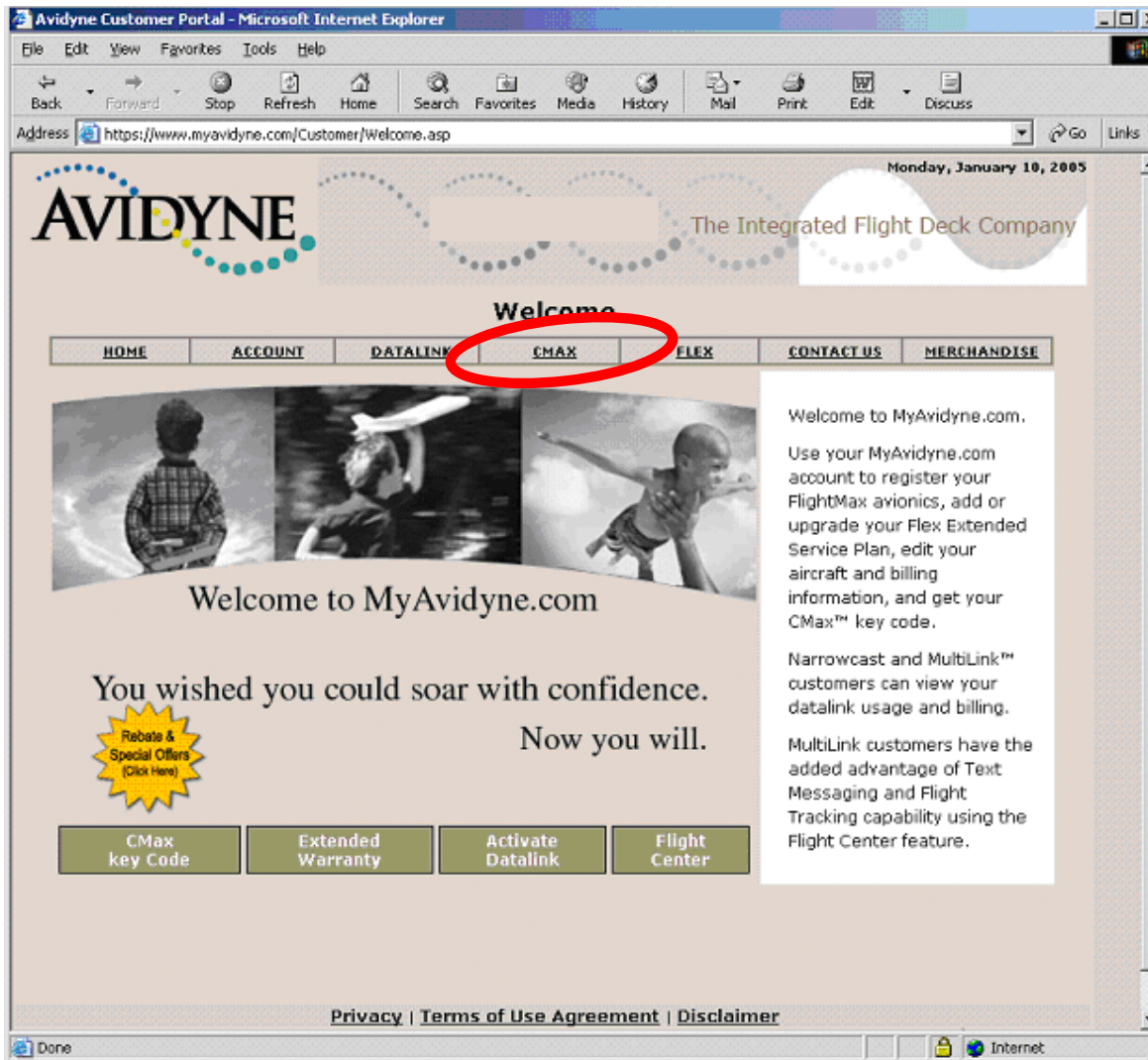


- 7. Check the box that applies to the model of MFD that you own.** If you have an Avidyne FlightMax PFD, you can register it at the same time by checking the box for PFD. Note that you must have both the MFD and the PFD serial number available for this registration to work for both units, so if you do not have your PFD serial number available, do not check the PFD box at this time. Press the “Continue” button to move to the next screen:



**8. Enter your MFD serial number.**

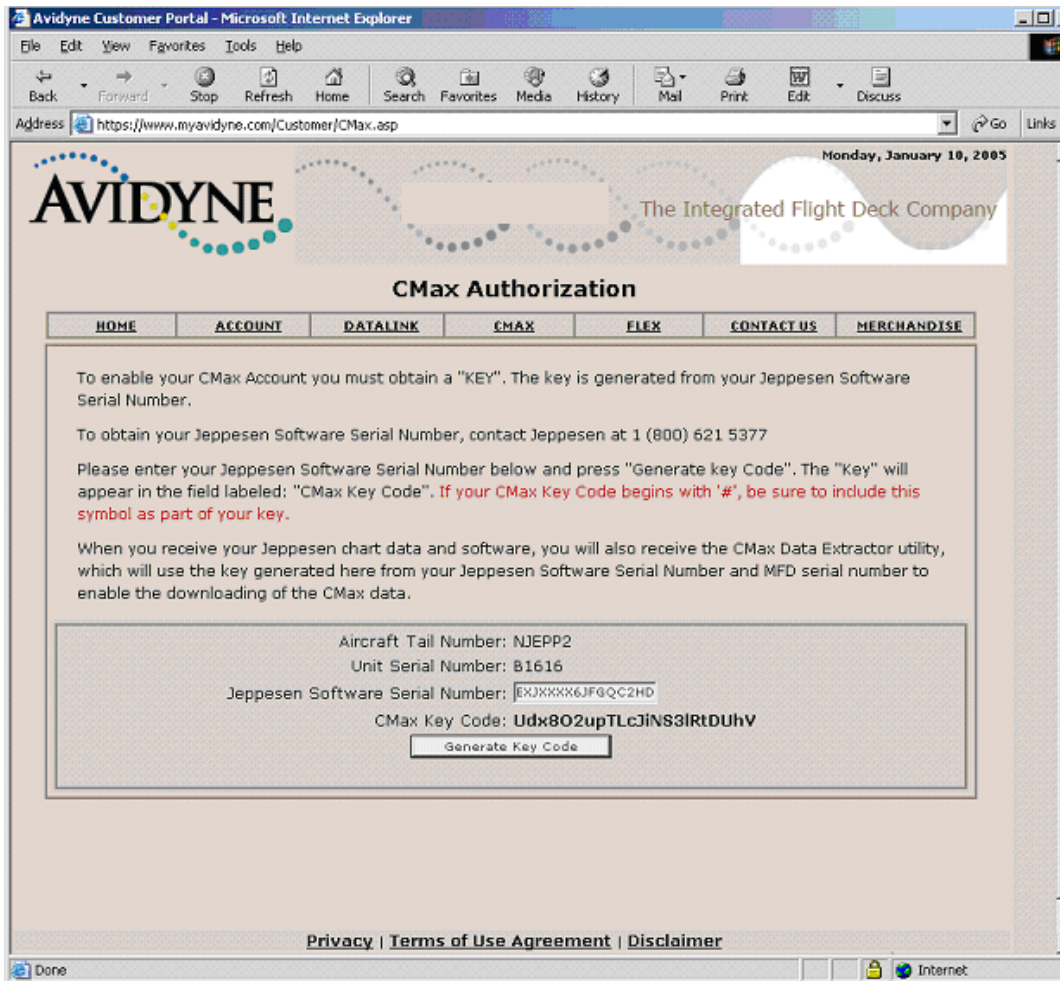
If your serial number has leading zeros, such as 00001850, do not enter the leading zeros, for example, enter 1850 in this case. If you checked the PFD box on the previous screen, this screen will also ask you to enter your PFD serial number. Press “Finish Enrollment” to create your myAvidyne account. This will bring you to the main myAvidyne screen:



This is the screen you will initially see anytime you log into myAvidyne.com.

## 9. Obtain your Avidyne CMax Key Code

To obtain your **Avidyne CMax Key Code**, visit [www.myAvidyne.com](http://www.myAvidyne.com). The CMax Key Code uniquely links your Jeppesen subscription number to your MFD Serial number and is necessary to successfully complete the dataload to your MFD. Once you are logged into myAvidyne.com, select the tab for the CMax page (shown above).



On the CMax page, enter your Jeppesen Software Serial Number. Be sure to type in the entire number (without spaces or dashes), or your dataload will be unsuccessful. Press the “Generate Key Code” button and your CMax Key Code will be issued. Be sure to store this number, as you may need it in the future. You can also “copy and paste” this number into the CMax Data Extractor you will use below. Your Avidyne CMax Key Code will be valid as long as neither your Jeppesen subscription number nor your Avidyne MFD unit serial number changes. You may need to repeat this step if for some reason your Jeppesen Software Serial Number or MFD Serial Number changes.

## 10. Receive Jeppesen Materials

Install the JeppView PC applications on your computer if you have not done so already. Consult the Jeppesen Quick Start Guide that is included with your initial Jeppesen discs.

Once you have completed these preparatory steps, you are ready to begin your first dataload operation.

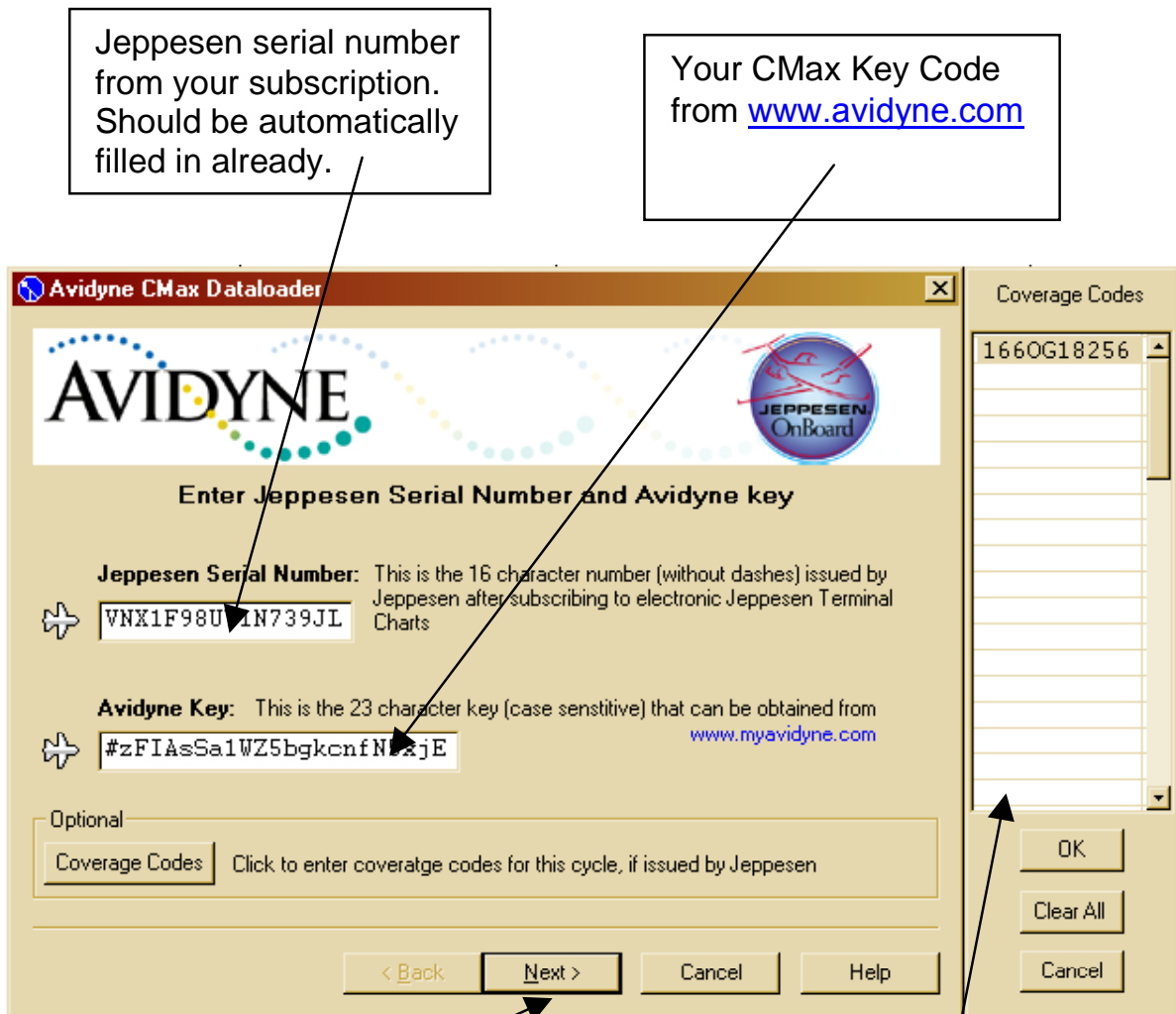
# Chart Data Update Procedure

## ***Extracting the JeppView Data***

To extract the JeppView data and transfer it to a portable ZIP drive, you will use the CMax data extractor.

To update the chart data in your MFD, follow the instructions found in the Jeppesen Quick Start Guide, which are summarized here, along with screenshots that show the CMax data extractor in action.

1. Load the Jeppesen chart data CD in the CD-ROM drive of your PC.
2. Connect the portable Zip disk dataloader to an USB port on your PC, then insert a Zip disk.
3. When you load a new Jeppesen chart data disc into your computer, the data installation should start automatically. The Jeppesen data installer will give you the option of installing the chart data onto your PC. After this, it will ask you if you want to run the Avidyne CMax Data Extractor to load the chart data onto the Zip drive dataloader for transfer to your MFD. Select this checkbox and the Jeppesen installer will automatically start the CMax data extractor.
4. Fill in your Jeppesen Software Serial Number and Avidyne CMax Key Code into the fields in the CMax Data Extractor window, as necessary. (see Figure 1) If you have installed the JeppView PC application on your computer, the Jeppesen Software Serial Number should already be filled in for you. The CMax Data extractor will store both of these numbers so you will not have to enter them the next time you run the extractor.
5. If you have installed JeppView on your PC, the coverage code fields should also already be filled in, if needed. You can check and/or update the Coverage Codes by clicking on the Coverage Codes button, which will display the Coverage Code fields on the right side of the extractor window. (see Figure 1)



**Figure 1 Serial Number Input Window**

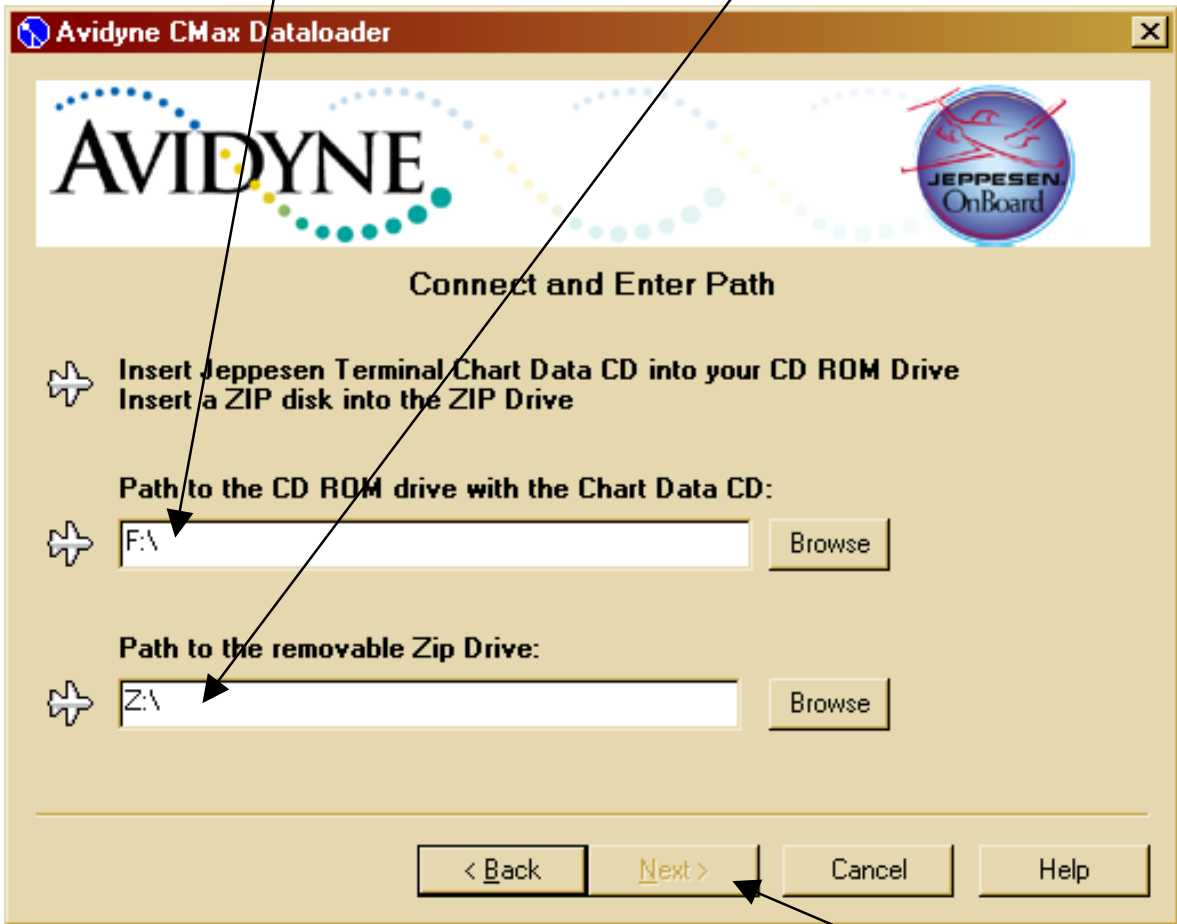
Next button becomes active when both Jeppesen serial number and CMax Key Code are of valid format.

Coverage code input window. Click the "Coverage Codes" button to show.

6. Press "Next" – The path selection window will appear (Figure 2)

Jeppesen Chart Data location. This is the drive location of the CD ROM drive with the current Chart Data CD.

CMax dataloader location. This is the drive location of the portable ZIP drive where the chart data is to be loaded.



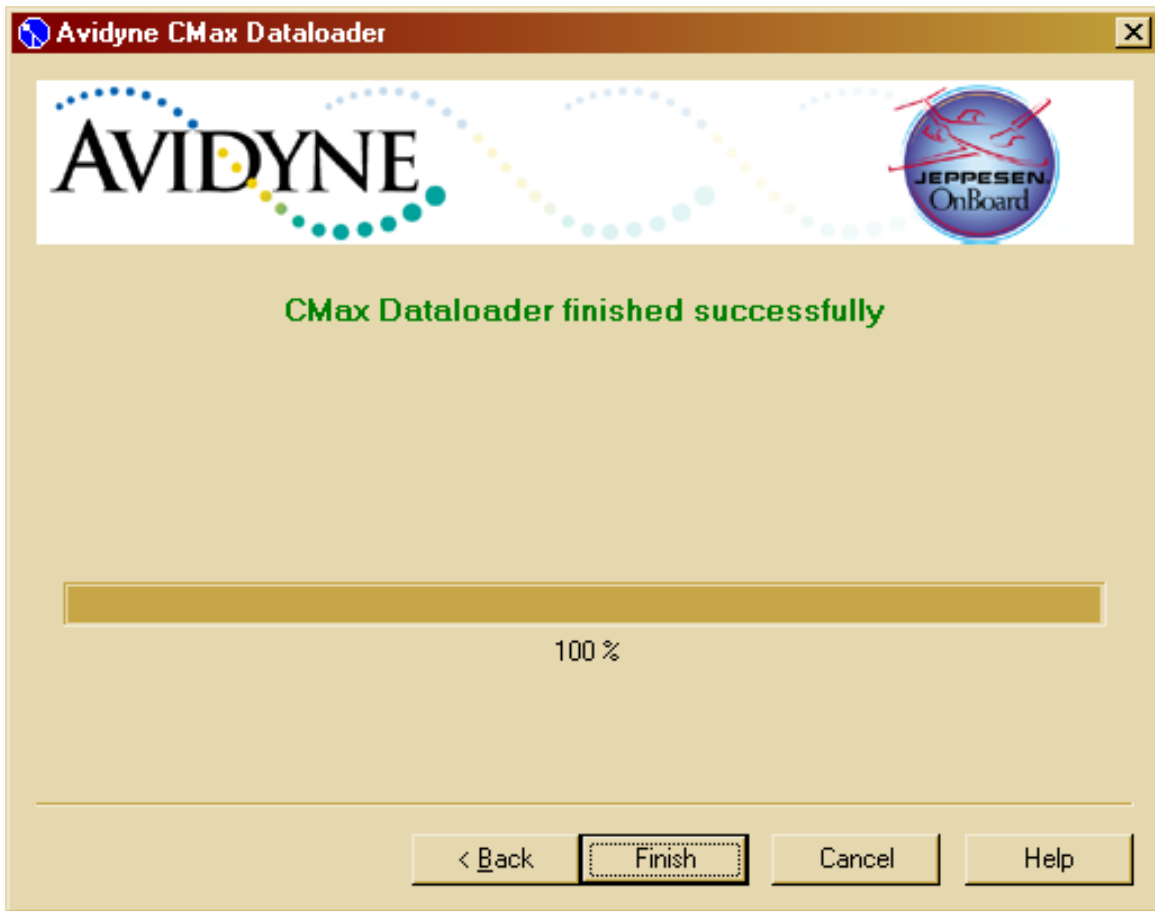
**Figure 2 Data Path Window**

The Next button will become active when both paths are valid.

7. Specify the drive location of the Jeppesen chart data CD-ROM.
8. Specify the drive location of the portable ZIP disk dataloader.
9. Press "Next". This will start the data extraction. A progress screen will appear.

The Data Extractor will report its progress as it transfers the data to the portable ZIP disk. When the transfer is complete, a message will appear indicating transfer was successful. (Figure 3)





**Figure 3 Successful Data Transfer Window**

10. Press "Finish" to complete the data Extraction Process.

The data extraction is complete; the next step is to load the data into your MFD.

## ***Loading the Data into the MFD***

**Caution:** Allowing the portable ZIP drive to dangle by the cable can result in damage to the MFD or drive, as well as a dataload failure.

**Caution:** Do not insert the Zip disk into the drive until the first FlightMax logo screen is displayed on the MFD. The disk may be damaged if it is already in the Zip drive when power is first applied.

**Caution:** After loading the CMax data into your MFD, always wait until the dataloader Zip disk has been ejected from the drive before you unplug the drive from the MFD, or power off the MFD. Neglecting this could damage the Zip disk.

1. With the MFD power off, connect the portable ZIP drive cable to the data port on the front of the MFD.
2. Apply power to the MFD. When the initial FlightMax logo screen is displayed, insert the Zip disk into the drive.
3. The Data Loader screen will appear. Press “Proceed” to start the loading of the chart data into the MFD.
4. The Data Loader will show its progress as it loads the data into the MFD. The Data Loader will perform an integrity check on the data after loading it and announce a successful data load if all data is valid.
5. When the dataload operation is complete, the MFD will continue to the normal Startup Screen.
6. Confirm the valid dates of the Chart data as reported on the Startup Screen.
7. Go to the Chart page and select a chart from an airport known to be in your subscription coverage area. Confirm that the chart is available.

# Troubleshooting

## **Data Extractor**

<b>Error</b>	<b>Solution</b>
The Jeppesen serial number invalid.	Verify the serial number was correctly entered. This number is case sensitive. Verify your subscription information is correct at <a href="http://www.jeppesen.com">www.jeppesen.com</a>
The CMax key is invalid.	Verify the CMax key was correctly entered. This number is case sensitive. The key is available at <a href="http://www.myavidyne.com">www.myavidyne.com</a>

## **MFD Data Load**

<b>Error</b>	<b>Solution</b>
The MFD data load reports corrupt data file.	Power down MFD, verify the data load cable is properly connected. The file stored on the ZIP disk may be corrupted. Rerun the CMax Extractor on your PC.
The MFD indicates invalid CMax key.	Verify the data was created for this MFD. Chart data for different MFDs is not interchangeable. Verify the CMax key was correctly entered. This number is case sensitive. The key is available at <a href="http://www.myavidyne.com">www.myavidyne.com</a>
The MFD indicates no chart data after reboot.	Reload data. Watch for errors during data load. Be sure the MFD indicates a successful data load before powering down.
Chart data on MFD does not match subscribed regions.	If this is a new subscription or the regions in this subscription have been modified, check your Jeppesen information for “coverage codes”. Rerun the extractor, entering the coverage codes. Contact Jeppesen billing support.

If one of these types of data load problem is experienced, follow the recommended steps above. If the data still cannot be properly loaded, contact Tech Support at the numbers below.

The aircraft may still be dispatched even after an unsuccessful data load operation. However, if chart data is not available on the MFD at the time of dispatch, ensure that the appropriate information to complete the flight is available on board. Contact Tech Support if not resolved.

For details on operational use of the CMax function, consult your Avidyne MFD Pilot's Guide.

In the unlikely event of data corruption during normal flight operations, the MFD may exhibit one of the following symptoms:

- MFD reports that no chart data is available at all.
- Chart page is not accessible.
- Expected airports are not available for chart selection.

If any of these are observed, reload the CMax chart data using the CMax data loader. If problems persist, contact your dealer or Tech Support.

## Contacts

**Jeppesen:** [www.jeppesen.com](http://www.jeppesen.com)

Tech support: 800-732-2800

Billing and subscription support: 800-621-5377

**Avidyne:** [www.avidyne.com](http://www.avidyne.com)

Tech support: 888-723-7592

# Glossary of Terms

*Avidyne Data Loader* – portable device that allows you to bring new chart data to your aircraft and update your MFD. Plugs into MFD data port on front of MFD.

*Avidyne CMax Key Code* – a unique number that ties your Jeppesen Serial Number to your MFD Serial Number. This is required for loading chart data.

*CMax Data Extractor* – PC based program that extracts your chart data from the Jeppesen CD-ROM and stores in on your MFD Data Loader.

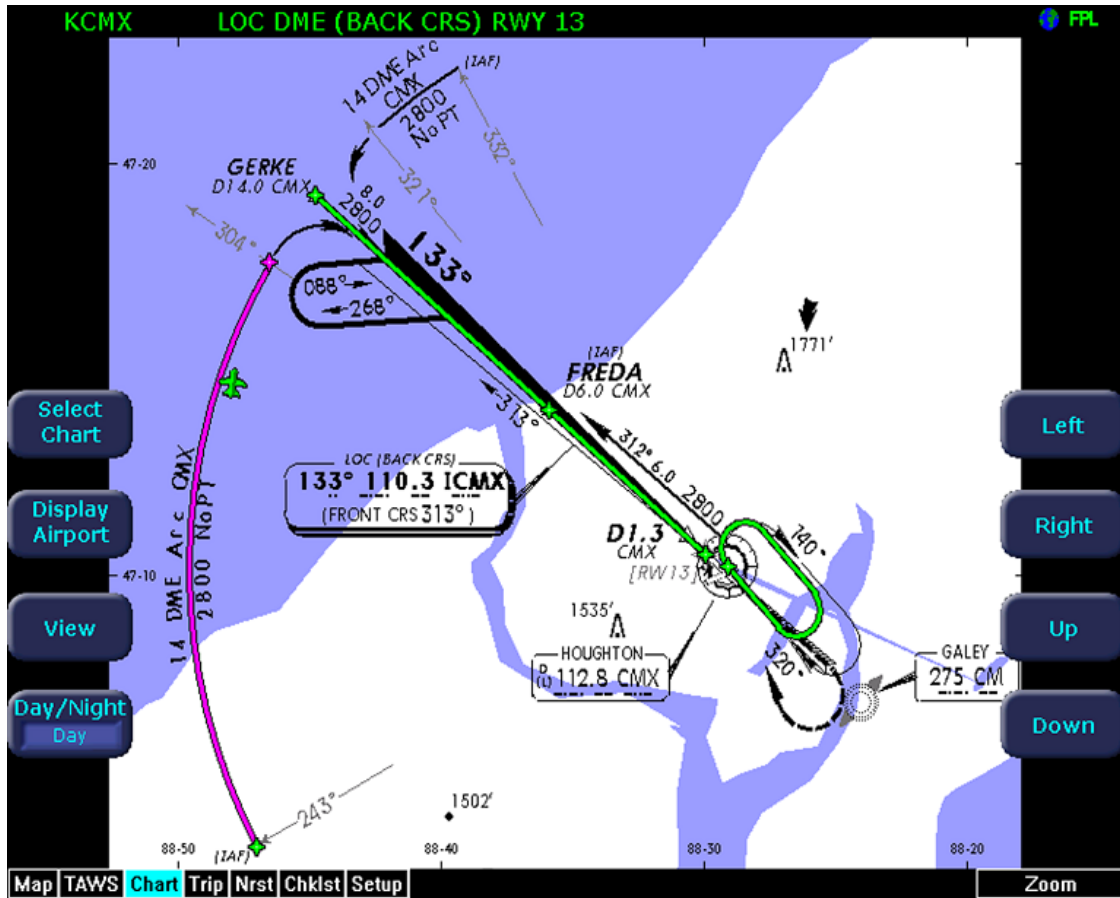
*Coverage Area or Coverage Region* – The geographic region that incorporates your chart subscription coverage. Examples are Eastern U.S., Western U.S., etc. See [www.jeppesen.com](http://www.jeppesen.com) for definitions of available coverage regions.

*Coverage Codes* – Optional codes issued by Jeppesen that allow you to access additional chart data coverage areas immediately, without waiting for the changes to become effective through your Jeppesen serial number. Coverage codes typically change every month.

*Jeppesen Serial Number* – Your unique subscription number issued by Jeppesen.

*MFD Serial Number* – The unique serial number of your MFD hardware.

--	--	--	--	--	--	--	--







AVIDYNE CORPORATION  
55 Old Bedford Road  
Lincoln, MA 01773  
Telephone: 781-402-7400  
Toll Free: 800-AVIDYNE (800-284-3963)  
FAX: 781-402-7599  
[www.avidyne.com](http://www.avidyne.com)

P/N 600-00114-000 Rev 01 01/05

